



# Your Strategic Partner in IT Solutions and AI Innovation

Drive your business forward with tailored, scalable IT solutions  
built to meet the demands of a digital world.



**10+**  
year experience



**110**  
Skilled Workforce



**100+**  
Satisfied Clients

Technology Innovation, Assertive Leadership, Deep Vision, Happy Business



## Unraveling Intelligence from Data Silos

Sen7 is an end-to-end data and AI platform that organizes data, evolves into generating intelligent insights, and ultimately becomes an autonomous system that monitors and improves your business.

- Unified data integration across multiple sources
- AI/ML-driven insights and predictions
- Interactive dashboards and visualizations
- Real-time analytics for faster decision-making
- Enterprise-grade secure and scalable architecture
- Natural language query (Text-to-SQL)

*Strongly recommend CxO's to consider Sen7 when  
looking for Enterprise Data Analytics" - CIO of  
Leading NBFC*



# O-APM Application Performance Management

Resolve Performance Issues at occurrence

APM gives you complete visibility into your applications — so you can detect issues early and resolve them faster.

## See thro' an App

- Early issue detection
- Real-time performance insights
- Distributed Tracing
- Instant root cause analysis
- End-to-end system visibility
- User experience tracking

## Achieve

- Reduced downtime
- Faster resolution
- Better user experience



Amidst the Technology whirlwind,

**Give  
yourself  
some space  
to halt,  
reflect and  
enjoy the  
miracle that  
your life is.**

# Apps & AI

Expertise on DevOps, cutting-edge AI innovations, with high success rate in AI deployments.

Real-world AI Experience.



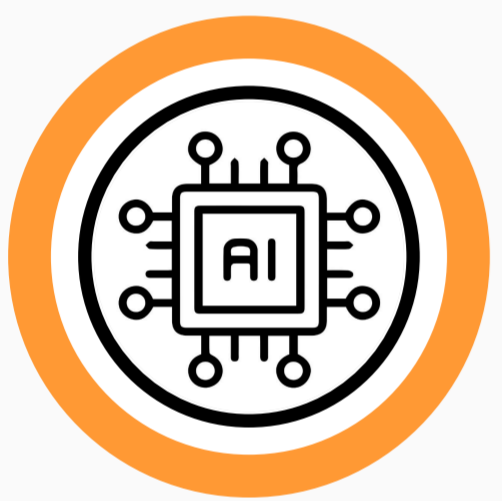
Custom App Development



Scenario Modeling



Expertise on training high volume datasets



Low-code AI platforms build



Rapid product prototyping & integration



Architecting virtual AI influencers for marketing, MIS & Analytics.



AI Chatbots & assistants



Process Automation tools build

# ONE PLATFORM TOTAL CONTROL

Cybersecurity. ITSM. AI – Unified.

## Preemptive Detection & Response with ZeroDwell™

Stop Unknown Threats before they Cause Damage.



### Cybersecurity

EDR | XDR | MDR | CNAPP | CTEM | ZTNA | SOC



### ITSM

RMM | Patch Management | Remote Access | Service Desk



### MANAGED AI

Enterprise AI Marketplace | White-Labeled AI Marketplace for MSPs | Pre-built AI Agents

PREEMPT. CONTAIN. PROTECT.



See **XCITIUM**  
In Action

[www.xcitium.com](http://www.xcitium.com)

# Security & Cyber Assurance



## Cloud Security:

Security & instance visibility of Cloud Workload

## Application Security

- Control vulnerabilities in code & open-source libraries
- Generate Software bill-of-materials (SBOM)
- Static & Dynamic Application Security Testing ( SAST / DAST),
- Software Composition Analysis (SCA)
- Container Security

## Security Consulting Services:

- **VA/PT:** CERT-IN certified VAPT Audits
- **Secure Code Review:** Vulnerabilities Identification in software Code
- **Compliance Automation Consulting:** GDPR, SOC2, ISO, PCI-DSS, HIPAA, DPDP  
Transforms compliance into a continuous, intelligent, and automated process— to always stay audit-ready across all controls.
- **Cyber Forensics:** Incident Log Analysis

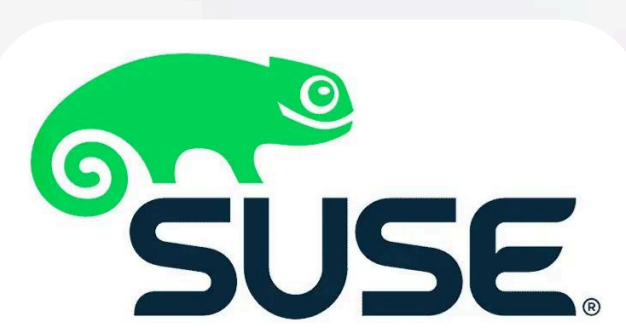
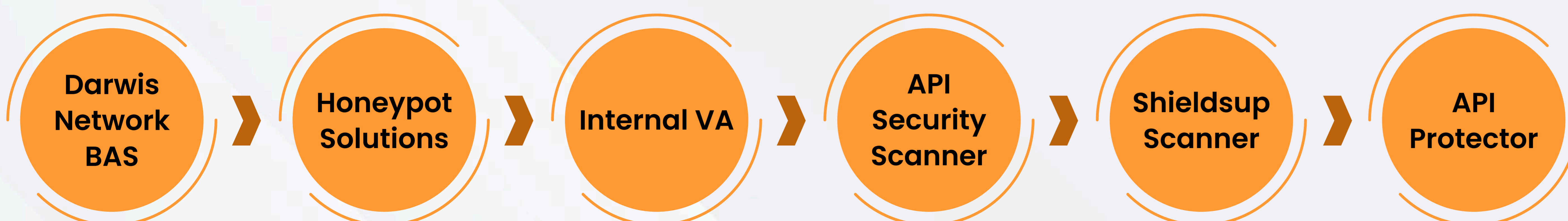
# SOC



## Cyber Brand Monitoring

Surface Area Monitoring; URLs ; Defacement; Fake Mobile Apps; DNS Hijacking

Negative News & Dark web monitoring on Web Forums; Negative news monitoring deliverables, consisting of structured outputs designed to identify and mitigate reputational, legal, or financial negative news associated with companies



# IT Consulting & Infrastructure Services

30+ years of experience backed strength ;  
Deep Automation ; Expertise Approach

Service Category	Offerings
Core Infrastructure	Servers, Storage, Network, WiFi, Firewalls, Campus Networks & WAN (SASE)
Management & Support	Supply, Maintain, Network Management, Skilled Resources Provision, AMCs
Compliance & Audits	License Renewals (Firewalls to Emails), Performance Audits
Consulting & Implementation	IT Strategy, Architected Frameworks, Full Deployment

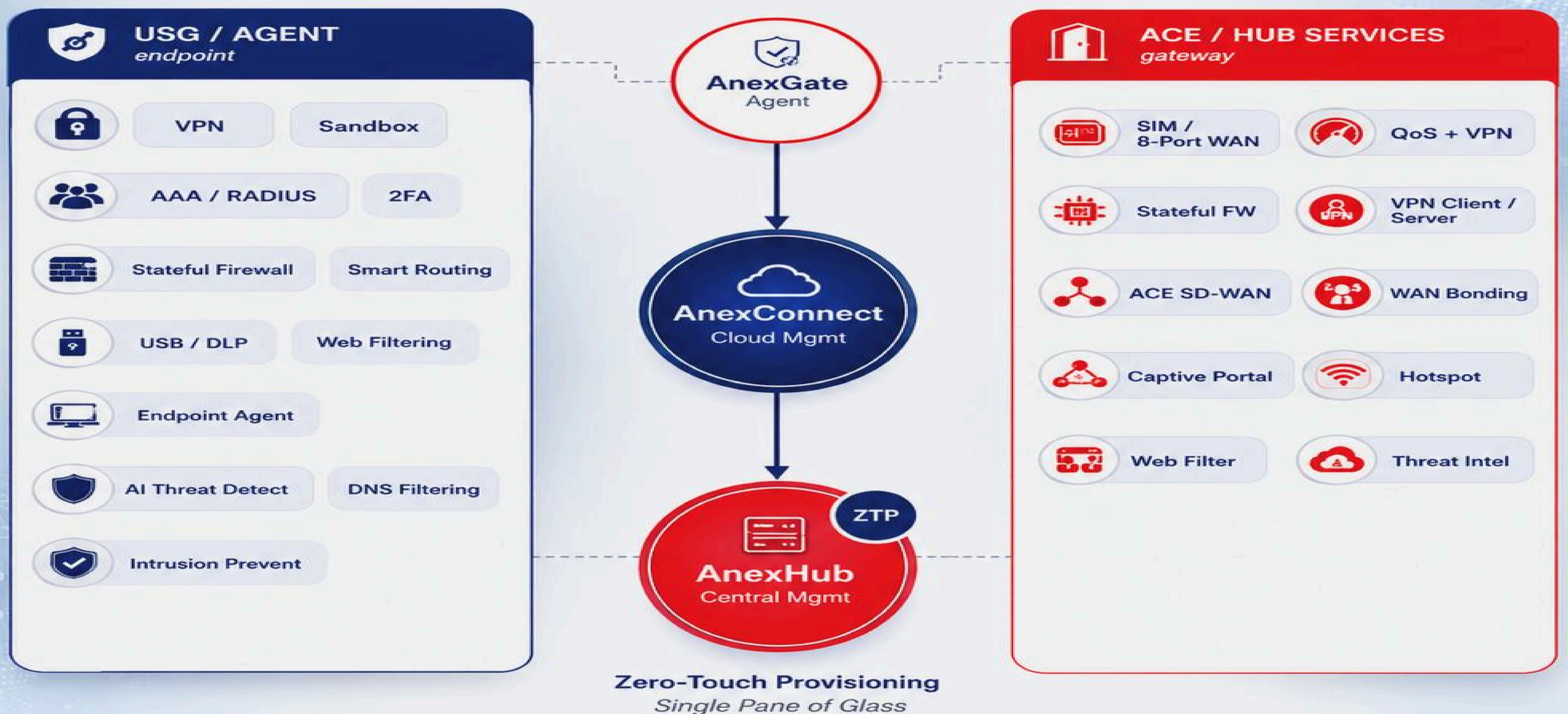
From data centres to branch connectivity...a seamless connected well architected design specialists.



Cybersecurity & SD-WAN • Made in India  
anexgate.com

## Unified Network Security Architecture

Cloud-managed firewall, SD-WAN & secure access — one fabric, zero add-ons.



### INTEGRATED SOLUTIONS



# CLOUD SERVICES

Run Your Cloud. Without Running Into Problems.

Secure | Monitor | Optimize | Manage | Cost Control

**Managed Services - Monitor 24/7, fully secured, Cost-optimized - 55+ customers**

## 24/7 Monitoring & Incident Response

Real-time visibility across infrastructure, applications, and networks

## Security & Compliance

Access control, threat detection, and compliance-ready cloud environments

## Cloud Operations

Patch management, backups, disaster recovery, and SLA-driven support

## Cost & Performance Optimization

Right-sizing resources, improving performance, and reducing cloud spend

## Automation & DevOps

CI/CD pipelines, infrastructure as code, and process automation

## Multi-Cloud Management

Seamless management across AWS, Azure, GCP, and private cloud, Unified governance

## End-to-End Cloud Expertise

From strategy to execution — we support your entire cloud journey:

### Consulting

Cloud Readiness | Strategy

### Solution Planning

Architecture | Design

### Implementation

Setup | Deployment

### Migration

Lift & Shift | Zero Downtime

### Modernization

Containers | Microservices | DevOps

### Business Impact

Lower costs. Stronger security. Better performance. Seamless scalability.

## Be cyber resilient

**Data backup and disaster recovery** - Be ever ready to recover data, applications and systems.

Keep your data immutable, indelible, and portable

Recover AI workloads at scale

Bring back your business 10x faster from ransom attack

Backup and recover all your workloads, including those in the cloud



Google Cloud



Azure



neevcloud



EDB



Commvault®

## SAMPAT Asset Management System

### SAMS – Next Generation IT / Non-IT Asset Management Platform with AI-driven Asset Intelligence

- End-to-End Lifecycle Governance
- Real-time depreciation, TCO analysis, and budget monitoring
- Continuous audit trails with zero manual dependency
- Digitized, mobile-first asset verification and tracking
- Predictive alerts for AMC, warranty, and renewals
- Asset owner & Services history
- Granular role-based access, approvals, and hierarchy controls
- Real-time insights into asset utilization and optimization

## SAMPAT Service Desk Software

### SSDS – Intelligent Service Operations Engineered for Speed, Precision, and Scale

- AI-driven Dynamic routing based on skills, workload, and priority
- Unified ticketing across email, portal, calls, and messaging platforms
- Advanced SLA based Automated tracking, escalation, and compliance enforcement
- Integrated knowledge base enabling self-service and reduced ticket volume
- Collaborative Service Execution
- Predictive analytics for recurring issues and root cause identification
- Comprehensive reporting across executive, operational, and domain levels
- KPI-based performance evaluation and continuous improvement

## SAMPAT User Productivity Monitoring

### SUPM – Data-Driven Workforce Productivity Intelligence

- Real-Time Activity Tracking of user activity, time logs, and work patterns
- AI driven Productivity Analytics, measure active vs idle time with actionable insights
- Application & URL Tracking – So, how tools and time were actually used
- Screenshot Monitoring (Configurable) – Visual validation with privacy controls
- Offline Data Sync – Complete tracking even without connectivity
- Comparative Performance Dashboards
- Alerts for anomalies and behaviours
- Reveals inefficiencies, training needs & workforce planning



## SAMPAT Document Management System

- Centralized Document Repository
- SOP / Policy / Manual Management
- Advanced Search & Quick Retrieval
- Role-Based Access Control

### SDMS

A secure centralized platform to create, organize, manage, share business documents, SOPs, manuals, and knowledge resources, across teams and customers.

- Version Control & Audit Trails
- Workflow & Approval Automation
- Internal / External Knowledge Base
- AI-Powered Search & Insights



AI-powered healthcare document processing for faster care and smarter decisions

Healthcare documents Automation — Digitize prescriptions, lab reports, discharge summaries, insurance forms.

### Key Capabilities:

- Medical OCR (Handwritten & Digital)
- Discharge Summary Generation
- Secure Compliance Processing
- Insurance Validation Support



**Instantly Capture. Extract. Verify. Integrate.**

AI-powered Automated processing, validation, transforming hardcopy documents into clean, decision-ready data.

**AI Enabled utility processing of:** Invoices, IDs, Forms, Financial documents, Application forms, KYC documents

### Core Capabilities:

- Smart Document Ingestion
- Intelligent Verification
- AI Data Extraction
- Seamless Integration

From documents to trusted data — without delays.

Two AI solutions. One outcome — faster processes, smarter decisions.

### Introducing Cheq+

Cheq+ — Intelligent Cheque Validation Engine

- Validate account details and cheque fields
- Cross-check amounts and validate signatures
- Identify missing or incorrect information
- Reduce fraud risks and manual verification effort

### Contact Us

44 3511 3668 / 91766 09105

www.amvionlabs.com

sales@amvionlabs.in

Amvion Labs

Amvion Labs

amvionlabs.pvt.ltd

Amvion Labs Pvt Ltd

#### Chennai

New No.1, Dr Ranga Rd, 2nd St, Alwarpet, Chennai, Tamil Nadu 600018

#### Cochin

NO 19, 2254, Pipeline Rd, Marottichuvadu, Edappally, Kochi, Kerala 682021

Offices at Coimbatore, Madurai, Hosur, Thiruvananthapuram, Vijayawada, Bengaluru